



Airbus Freighter Conversion

A320P2F – A321P2F – A330-200P2F – A330-300P2F

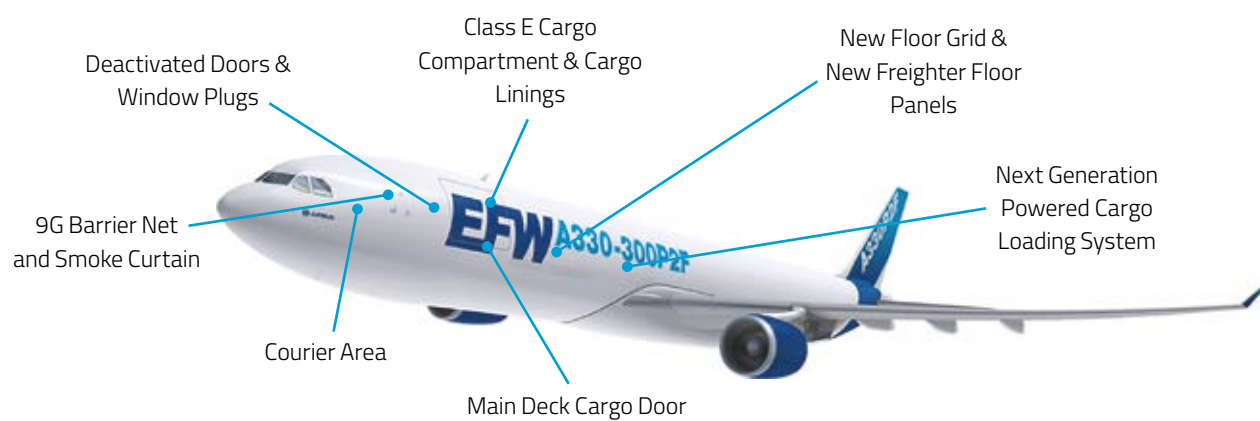
A330-300P2F and A330-200P2F



THE NEXT GENERATION WIDEBODY FREIGHTER

Unprecedented efficiency, the ideal volume and payload characteristics as well as a perfect integration into the regular Airbus fleet the A330-200/-300P2F provides new standards in usability and economics in the widebody conversion market.

CONVERSION FEATURES



Additional modifications

- Flight warning computer upgrade
- Smoke detection system
- Simplified water and waste system
- Hydraulic system

Optional features

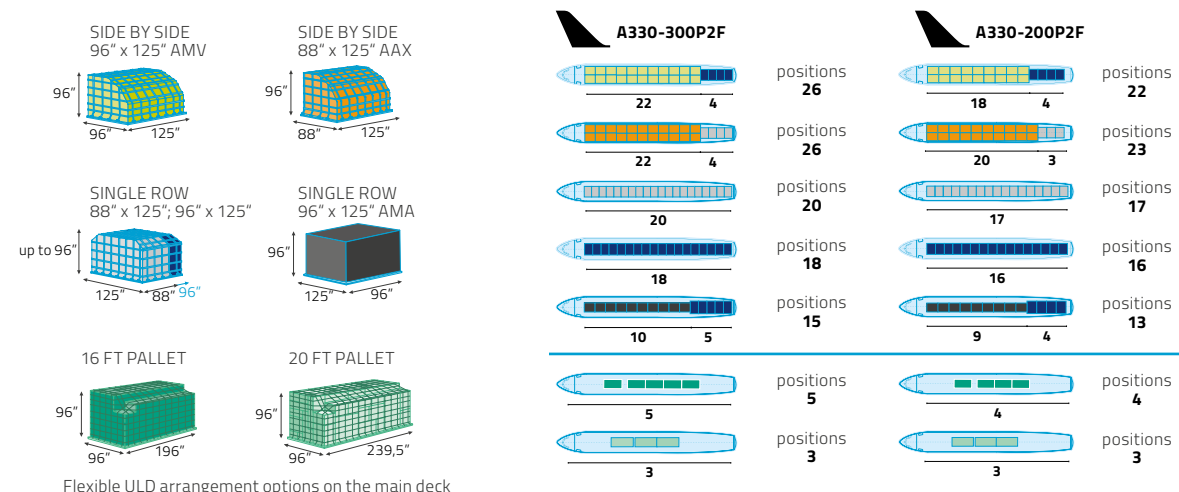
- Extra seats
- Courier module or flight crew rest compartment
- Livestock transportation option
- Integrated manuals
- 16/20ft pallet option

AIRCRAFT DATA

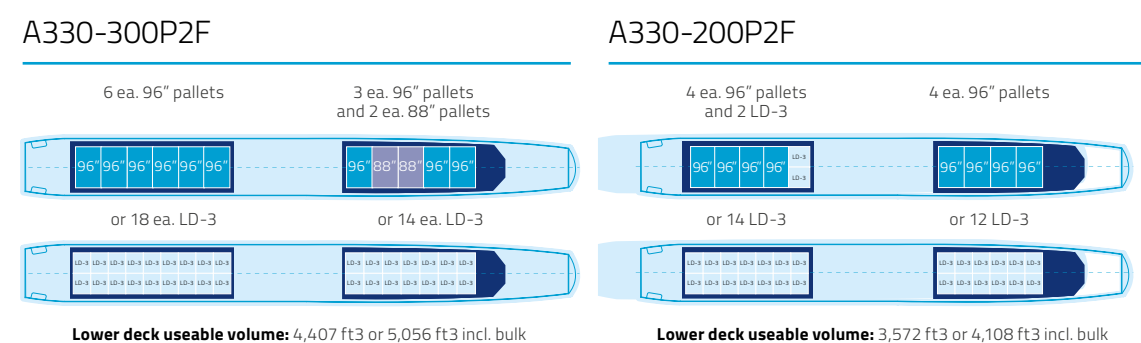
	A330-300P2F	A330-200P2F
Maximum containerized volume	526 m ³ (18,580 ft ³)	453 m ³ (16,000 ft ³)
Payload	Up to 62 t (136,700 lbs)	Up to 60 t (132,300 lbs)
Range capability	Up to 3,600 nm	Up to 3,900 nm

POWERED FOR YOUR CARGO

MAIN DECK CARGO LOADING



LOWER DECK CARGO LOADING



Conversion features

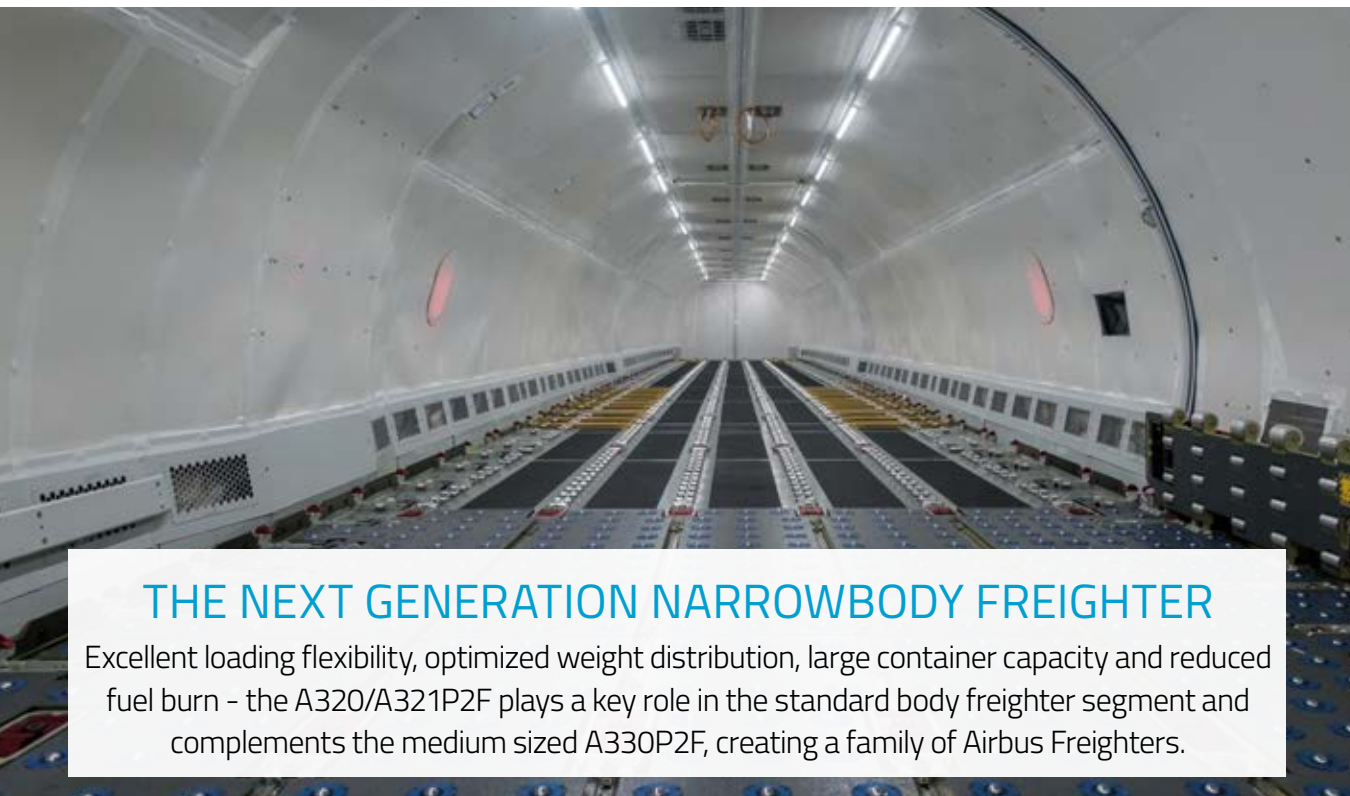
MAIN DECK CARGO DOOR
141" clear width and 101" clear height, hydraulically operated.

POWERED CARGO LOADING SYSTEM
Reliable, Fast, Save and Cost Effective Loading.

COURIER AREA
Courier module or crew rest compartment, 4 CAS, full provisions for galley equipment, stowage compartment and all new Lav. A.

9G CRASH NET AND SMOKE CURTAIN
Proven design: weight saving and durability for maximum payload.

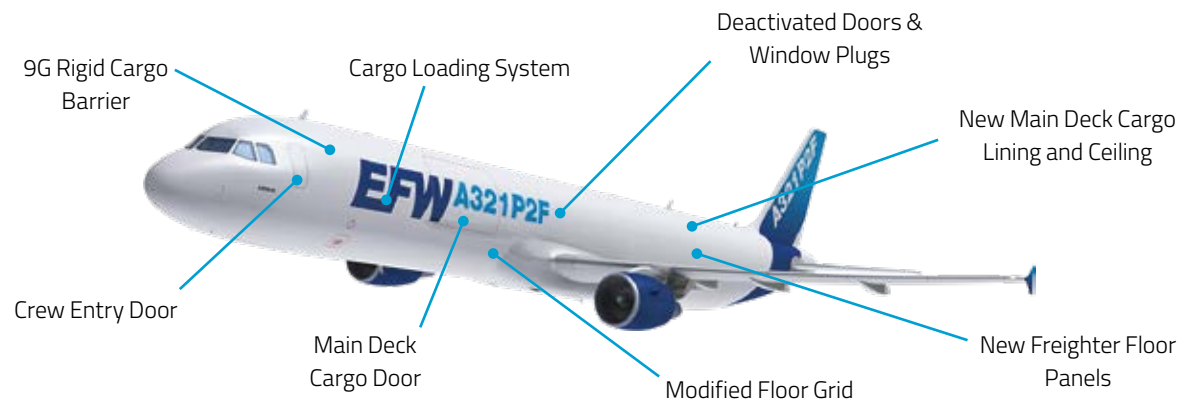
A320P2F AND A321P2F



THE NEXT GENERATION NARROWBODY FREIGHTER

Excellent loading flexibility, optimized weight distribution, large container capacity and reduced fuel burn - the A320/A321P2F plays a key role in the standard body freighter segment and complements the medium sized A330P2F, creating a family of Airbus Freighters.

CONVERSION FEATURES



Additional modifications

- ANCR main deck Cargo Loading System (CLS)
- Fully integrated cockpit compatible with latest standard
- PAX doors re-skinned or plugged
- Flight warning computer modification
- Smoke detection system
- Air distribution system
- Hydraulic system
- Lighting system

Optional features

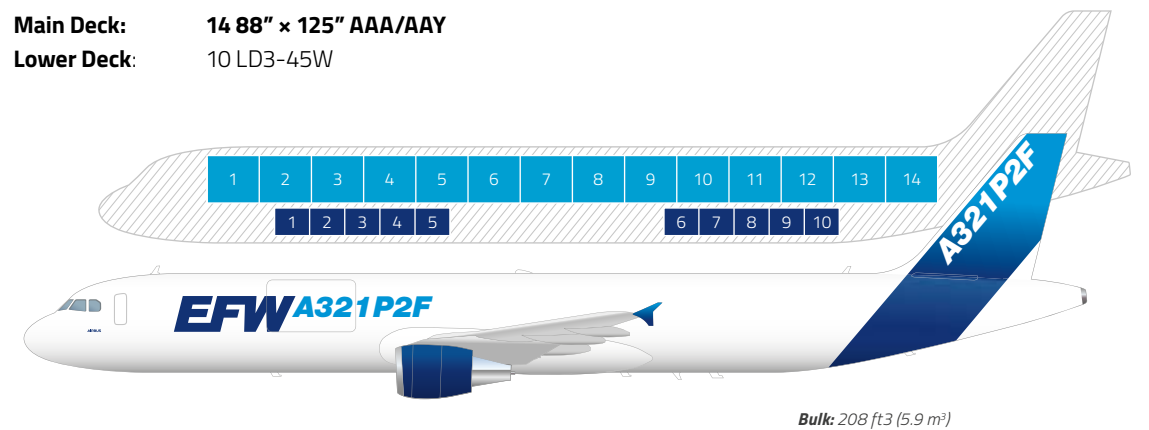
- Integrated manuals
- Lower deck Cargo Loading System
- Additional center tanks (ACT)

BEST POSITIONED FOR YOUR LOAD

	A320P2F	A321P2F
Containerized volume	158 m ³ (5,603 ft ³)	208 m ³ (7,348 ft ³)
Max. payload	Up to 21.4 t (47,200 lbs)	Up to 28.1 t (62,000 lbs)
Range capability (max. payload)	Up to 1,850 nm	Up to 2,050 nm

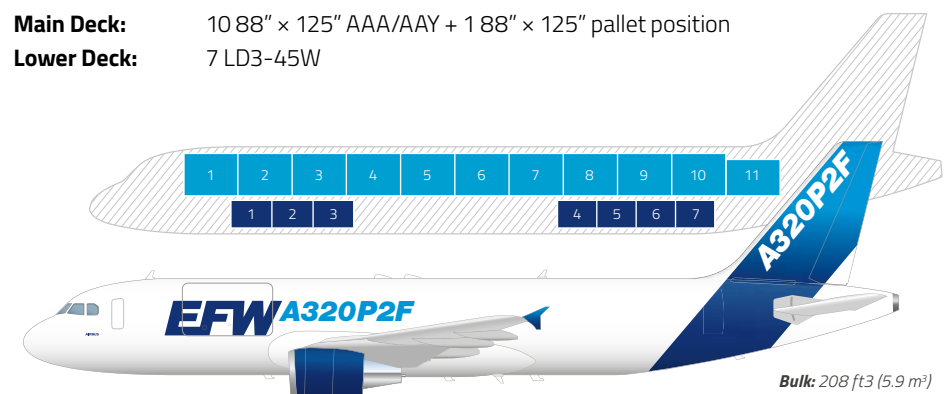
A321P2F – 14 + 10 CONTAINER POSITIONS

Main Deck: 14 88" x 125" AAA/AAY
Lower Deck: 10 LD3-45W



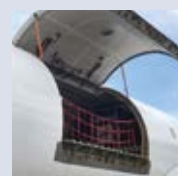
A320P2F – 10 + 1 + 7 ULD POSITIONS

Main Deck: 10 88" x 125" AAA/AAY + 1 88" x 125" pallet position
Lower Deck: 7 LD3-45W



Conversion features

MAIN DECK CARGO DOOR
 142" width and 85" height clearance, hydraulically actuated and electrically locked.



HIGHEST CONTAINER VOLUME IN CLASS
 14 full size 88"x125" ULDs (AAA, AAY).



9G RIGID CARGO BARRIER
 Lightweight and durable design, optimal usage of available space.



MANUAL CARGO LOADING SYSTEM
 Full support of industry standard narrowbody ULDs.



SERVICES

EFW supports the entire lifecycle of your aircraft from engineering services to conversion and heavy maintenance activities.



MRO

EFW MRO QUICK REFERENCE

- **CERTIFICATION:** EASA Part-145
- **SCOPE:**
 - A/C types: A320-Family, A300&A310, A330&A340, A380
 - Major cockpit and avionic MRO
 - Military MRO

EFW is offering stand-alone maintenance for both passenger aircraft and freighters – with a clear focus on Airbus aircraft and a wide-ranging maintenance portfolio:

- Line and base maintenance
- Cabin modifications
- Heavy structural modifications and repairs
- Major cockpit and avionic modifications and upgrades
- Prototype and special purpose modifications (MRT)
- Sharklet modification

Airworthiness Services

EFW CAMO QUICK REFERENCE

- **CERTIFICATION:** EASA Part-CAMO
- **SCOPE:**
 - A/C types : A320Fam, A330
 - Airworthiness Management
 - Airworthiness Review
 - Permit to Fly
 - Worldwide activities

As a Continuing Airworthiness Management Organization (CAMO), EFW is responsible for all activities related to continuing airworthiness & airworthiness review for customer aircraft.

- Full lease transition support
- Aircraft support during P2F conversion at EFW
- Pre purchase inspections during aircraft procurement
- EASA compliance checks
- Integration of Engineering and Programme department
- Transparent and independent CAMO

EFW'S P2F VALUE PROPOSITION



WE SUPPORT THE WHOLE LIFECYCLE

- Entire service portfolio around the product life cycle
- MRO checks alongside P2F to minimize overall layover periods
- 24/7 customer support incl. AOG support ensures seamless freighter operations
- CAMO service covering activities related to continuing airworthiness and airworthiness review



WE PROVIDE HASSLE FREE CONVERSIONS

- Worldwide network
- Direct OEM support
- Fixed supply chain offering highest supply rate
- Full package of manual supplements



WE KNOW WHAT WE ARE DOING

- EASA, FAA, CAAC approvals among others
- EFW is **the** Airbus service provider
- Over 30 years of experience in conversion business





CONTACT US

Elbe Flugzeugwerke GmbH
Grenzstraße 1
01109 Dresden/Germany

marketing@efw.aero

www.efw.aero

