



Passenger-to-Freighter Conversions

Driving the Airbus Freighter Family

A320P2F – A321P2F – A330-200P2F – A330-300P2F

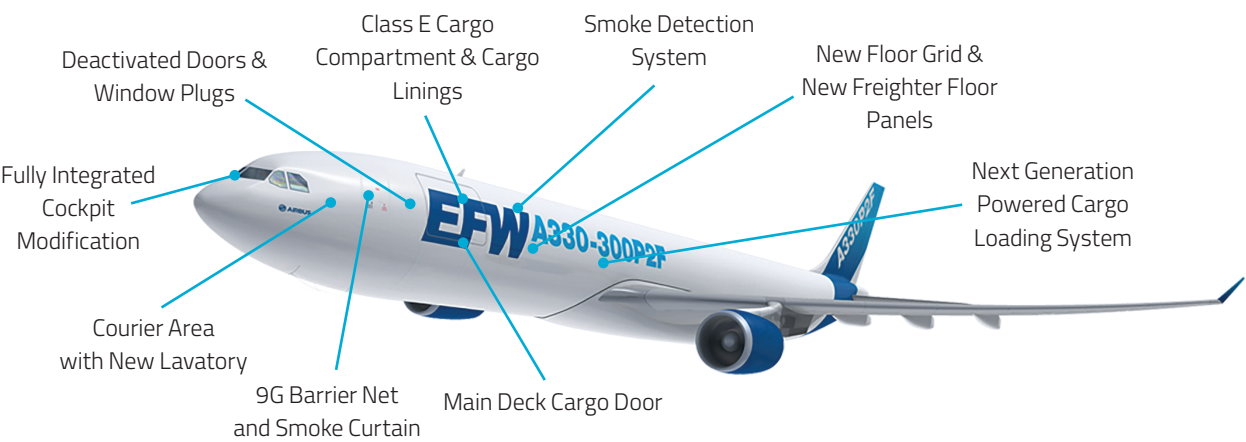
A330-300P2F and A330-200P2F



THE NEXT GENERATION WIDEBODY FREIGHTER

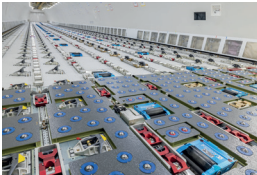
Unprecedented efficiency, the ideal volume and payload characteristics as well as a perfect integration into the regular Airbus fleet the A330P2F provides new standards in usability and economics in the widebody conversion market.

CONVERSION FEATURES



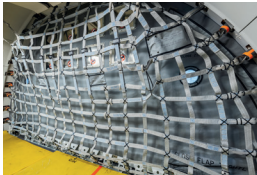
MAIN DECK CARGO DOOR

141" clear width and 101" clear height, hydraulically operated



POWERED CARGO LOADING SYSTEM

Reliable, fast, save and cost-effective loading



COURIER AREA

Courier module or crew rest compartment, 4 CAS, full provisions for galley equipment, stowage compartment and all new Lav. A



9G CRASH NET AND SMOKE CURTAIN

Proven design: weight saving and durability for maximum payload

Optional Features

- Ultra high comfort cabin attendant seats
- Courier module or flight crew rest compartment
- Livestock transportation option
- 16/20 ft pallet option
- Main deck cargo compartment access

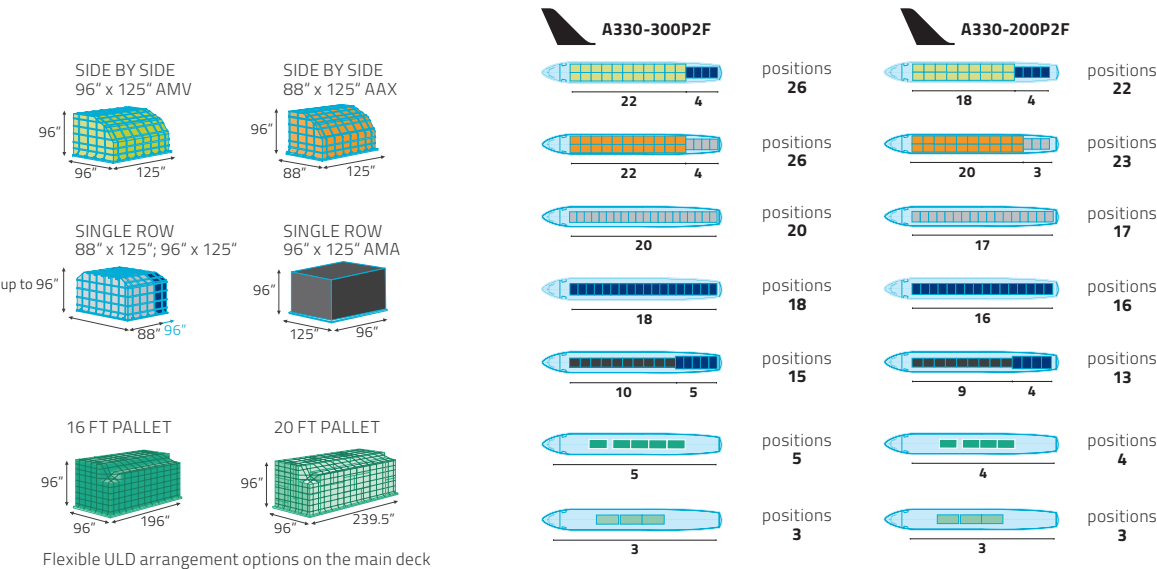
AIRCRAFT DATA



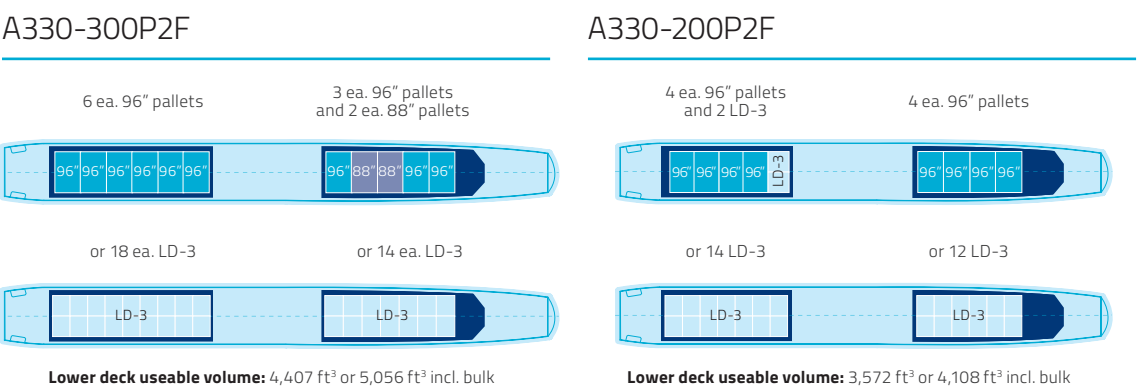
	A330-300P2F	A330-200P2F
Maximum containerized volume	526 m ³ (18,580 ft ³)	453 m ³ (16,000 ft ³)
Payload	Up to 62 t (136,700 lbs)	Up to 60 t (132,300 lbs)
Range capability	Up to 3,600 nm	Up to 3,900 nm

POWERED FOR YOUR CARGO

MAIN DECK CARGO LOADING



LOWER DECK CARGO LOADING



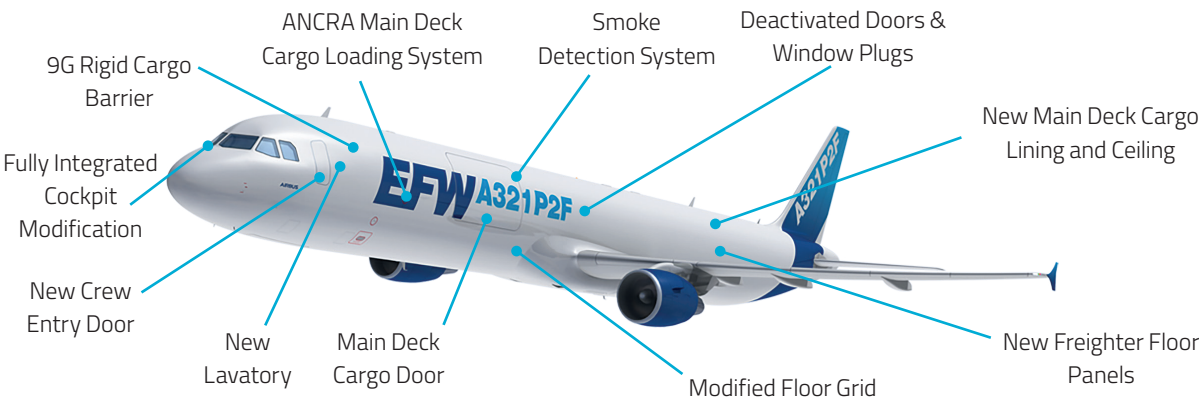
A320P2F AND A321P2F



THE NEXT GENERATION NARROWBODY FREIGHTER

Excellent loading flexibility, optimized weight distribution, large container capacity and reduced fuel burn - the A320/A321P2F plays a key role in the standard body freighter segment and complements the medium sized A330P2F, creating a family of Airbus freighters.

CONVERSION FEATURES



MAIN DECK CARGO DOOR
142" width and 85" height clearance, hydraulically actuated and electrically locked



MANUAL CARGO LOADING SYSTEM
Full support of industry standard narrowbody ULDs



HIGHEST CONTAINER VOLUME IN CLASS
14 full size 88"x125" ULDs (AAA, AAY)



9G RIGID CARGO BARRIER
Lightweight and durable design, optimal usage of available space

Optional Features

- Lower deck cargo loading system
- Additional center tanks (ACT)
- Stowage module including hot cup and oven
- Additional seat including own (stand-alone) oxygen supply

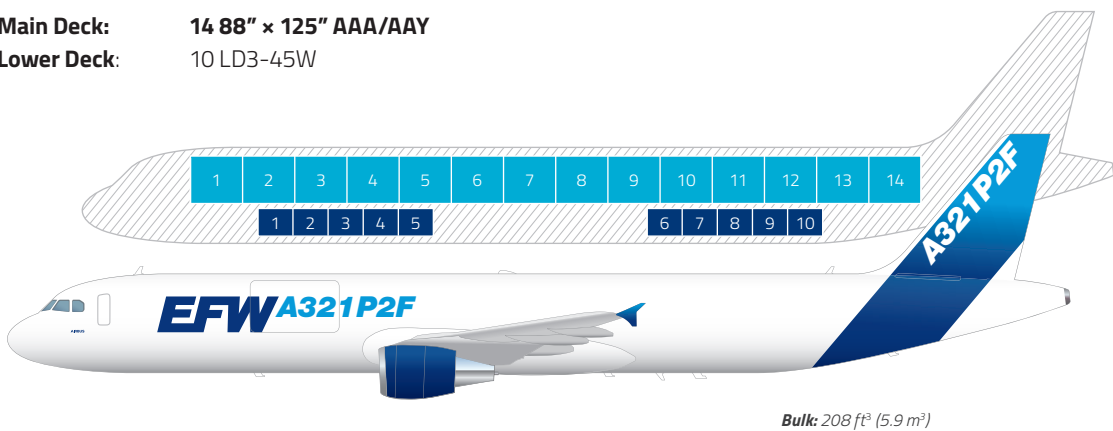
BEST POSITIONED FOR YOUR LOAD



	A320P2F	A321P2F
Containerized volume	158 m ³ (5,603 ft ³)	208 m ³ (7,348 ft ³)
Max. payload	Up to 21.4 t (47,200 lbs)	Up to 28.1 t (62,000 lbs)
Range capability (max. payload)	Up to 1,850 nm	Up to 2,050 nm

A321P2F – 14 + 10 CONTAINER POSITIONS

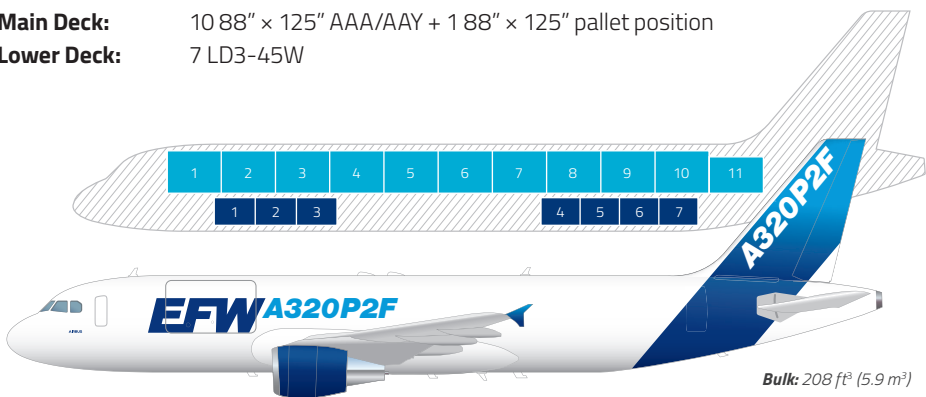
Main Deck: 14 88" × 125" AAA/AAY
Lower Deck: 10 LD3-45W



Bulk: 208 ft³ (5.9 m³)

A320P2F – 10 + 1 + 7 ULD POSITIONS

Main Deck: 10 88" × 125" AAA/AAY + 1 88" × 125" pallet position
Lower Deck: 7 LD3-45W



Bulk: 208 ft³ (5.9 m³)

SERVICES

EFW supports the entire lifecycle of your aircraft from engineering services to conversion and heavy maintenance activities.



MRO

EFW MRO QUICK REFERENCE

- **CERTIFICATION:** EASA Part-145
- **SCOPE:**
 - A/C types: A320 Family, A300&A310, A330&A340, A380
 - Major cockpit and avionic MRO
 - Military MRO

EFW is offering stand-alone maintenance for both passenger aircraft and freighters – with a clear focus on Airbus aircraft and a wide-ranging maintenance portfolio:

- Line and base maintenance
- Cabin modifications
- Heavy structural modifications and repairs
- Major cockpit and avionic modifications and upgrades
- Prototype and special purpose modifications (MRT)
- Sharklet modification

Airworthiness Services

EFW CAMO QUICK REFERENCE

- **CERTIFICATION:** EASA Part-CAMO
- **SCOPE:**
 - A/C types : A320 Family, A330, A380
 - Airworthiness Management
 - Airworthiness Review
 - Permit to Fly
 - Worldwide activities

As a Continuing Airworthiness Management Organization (CAMO), EFW is responsible for all activities related to continuing airworthiness & airworthiness review for customer aircraft.

- Full lease transition support
- Aircraft support during P2F conversion at EFW
- Pre purchase inspections during aircraft procurement
- EASA compliance checks
- Integration of Engineering and Programme department
- Transparent and independant CAMO

EFW'S P2F VALUE PROPOSITION



WE SUPPORT THE WHOLE LIFECYCLE

- Entire service portfolio around the product lifecycle
- MRO checks alongside P2F to minimize overall layover periods
- 24/7 customer support including AOG support ensures seamless freighter operations
- CAMO service covering activities related to continuing airworthiness and airworthiness review



WE PROVIDE HASSLE FREE CONVERSIONS

- Worldwide network
- Direct OEM support
- Fixed supply chain offering highest supply rate
- Full package of manual supplements



WE KNOW WHAT WE ARE DOING

- EASA, FAA, CAAC approvals among others
- EFW is **the** Airbus service provider
- Over 30 years of experience in conversion business



CONTACT US

Elbe Flugzeugwerke GmbH
Passenger-to-Freighter Conversions
Grenzstraße 1
01109 Dresden/Germany

marketing@efw.aero

www.efw.aero